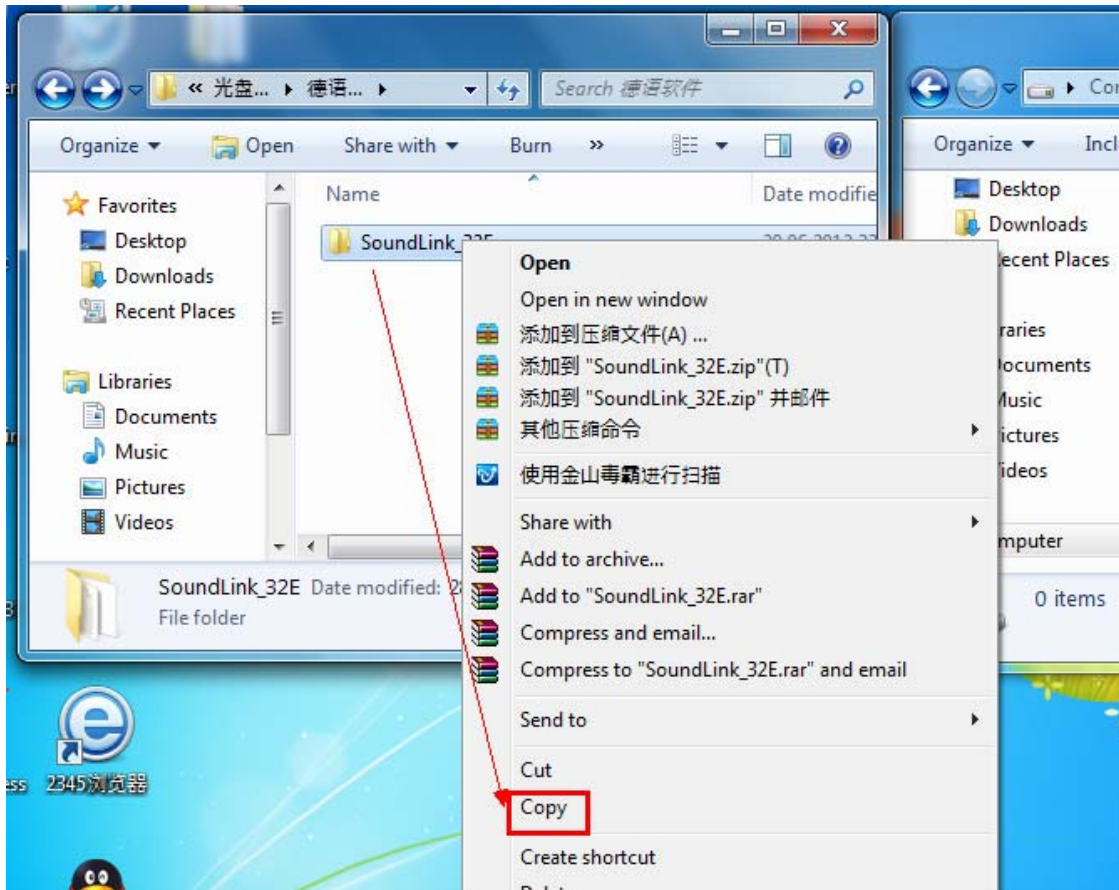
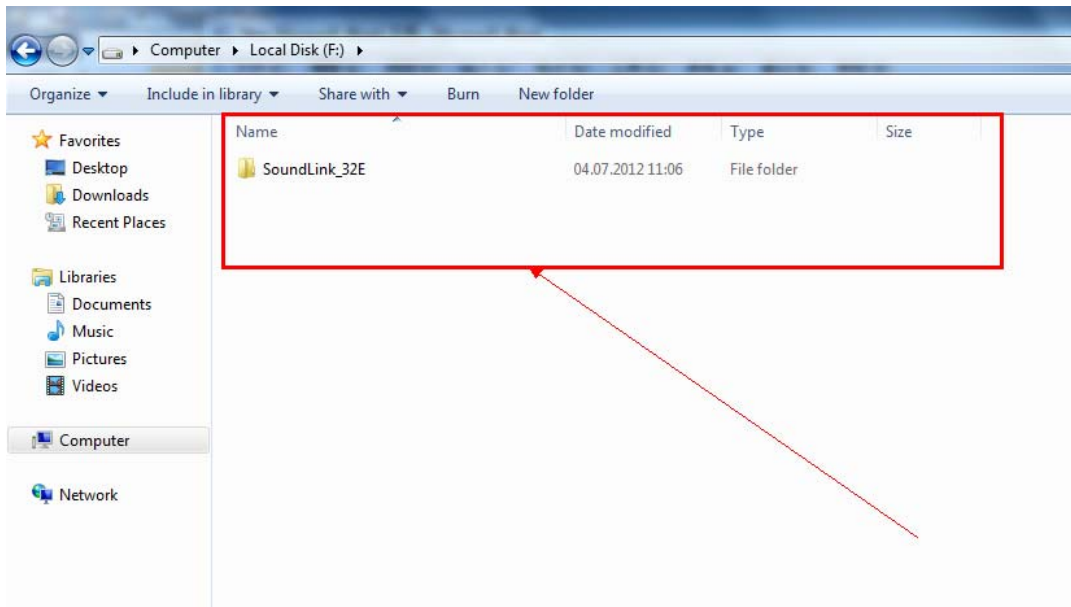


## Software Installation (win 7 32bit)

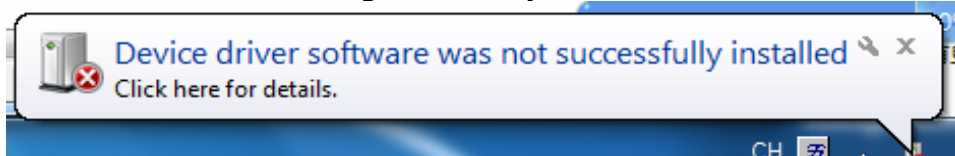
1, Copy the content from the CD to F Disk ( or some other disk ), as it shows below :



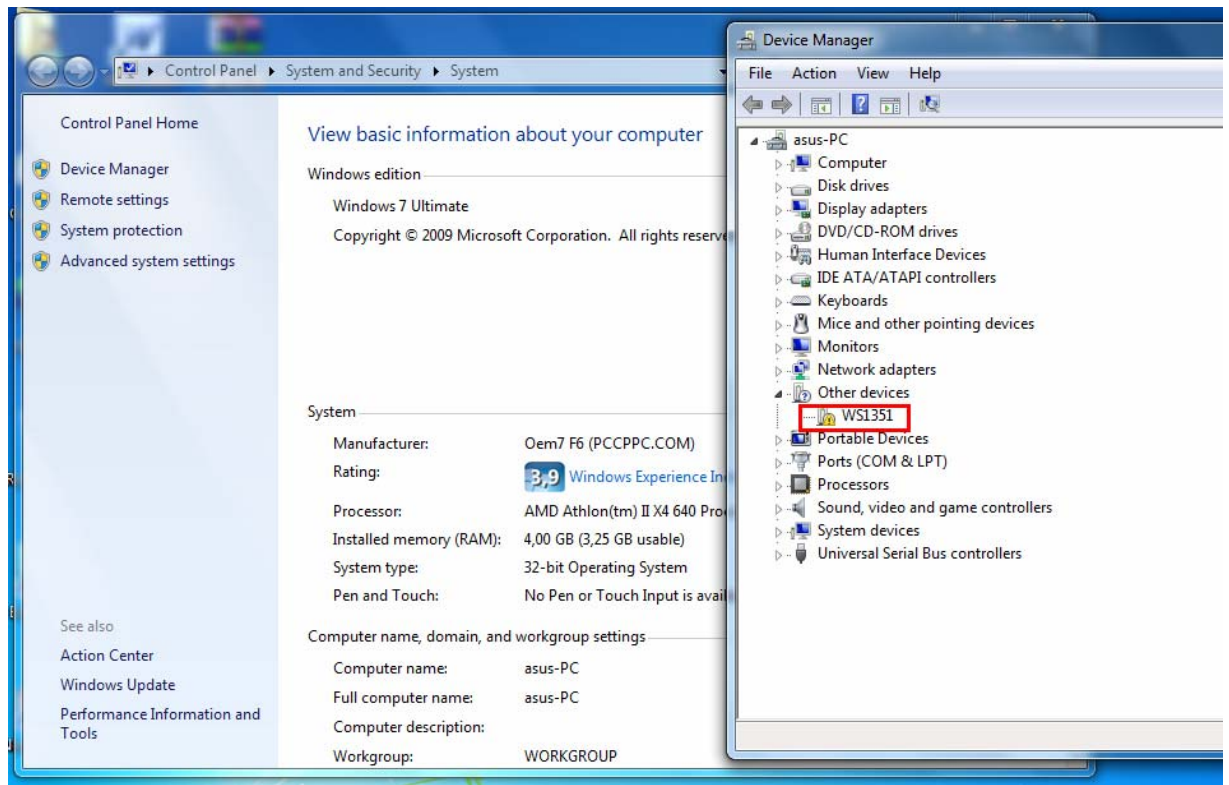
Pasted into F stick as below :



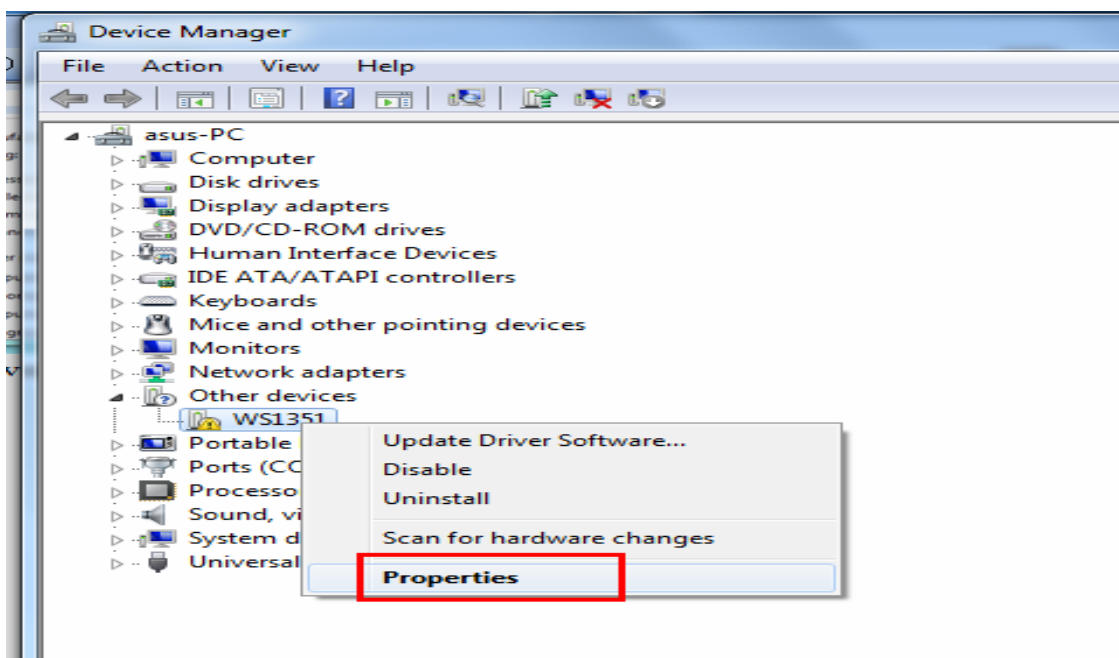
Connect the device to the computer with USB cable , on the right corner of the computer , you will see the the below message , it means you need to install the USB driver manually

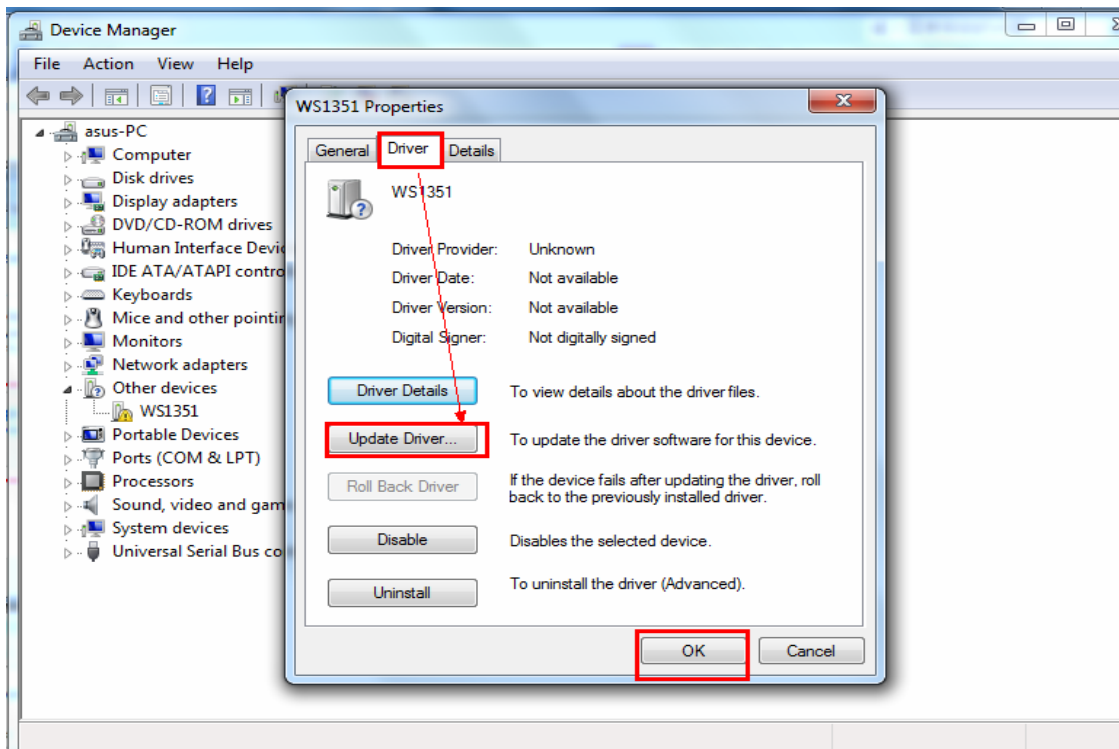


Right click Computer----properties-----Device Manager , you will see below picture :

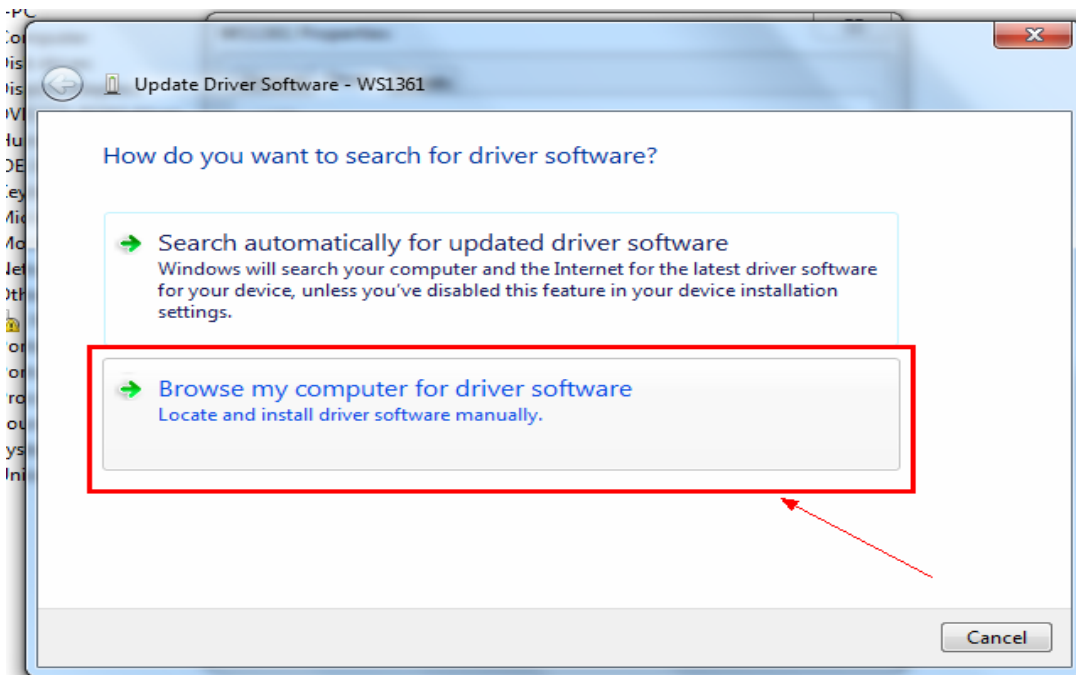


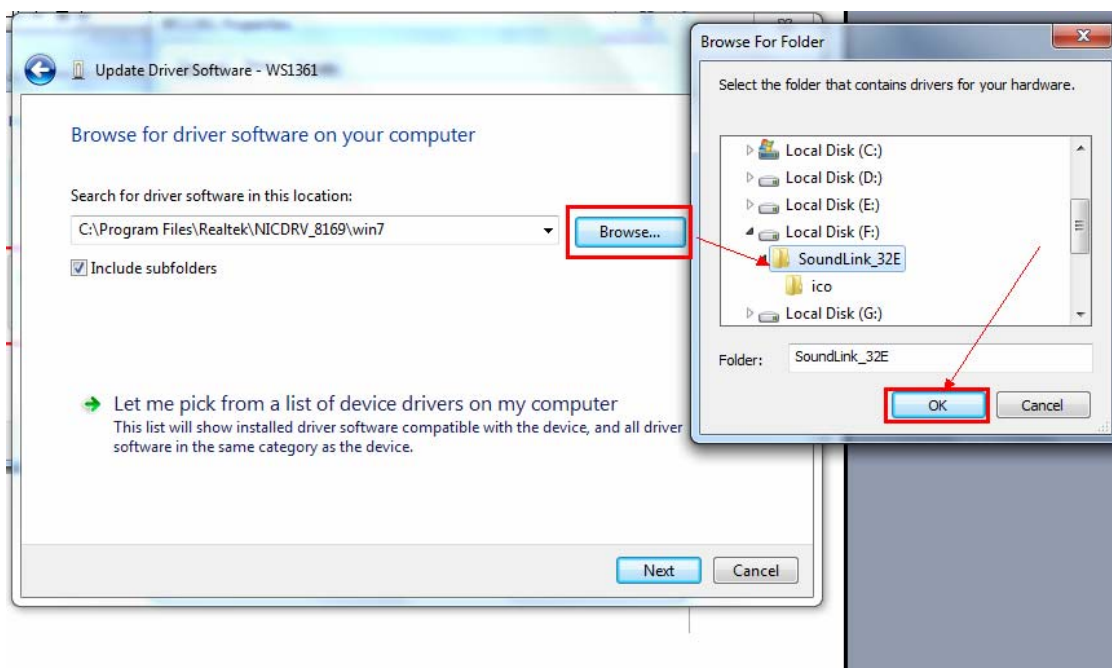
You can see a yellow mark in this picture , and right click it , enter the following picture:



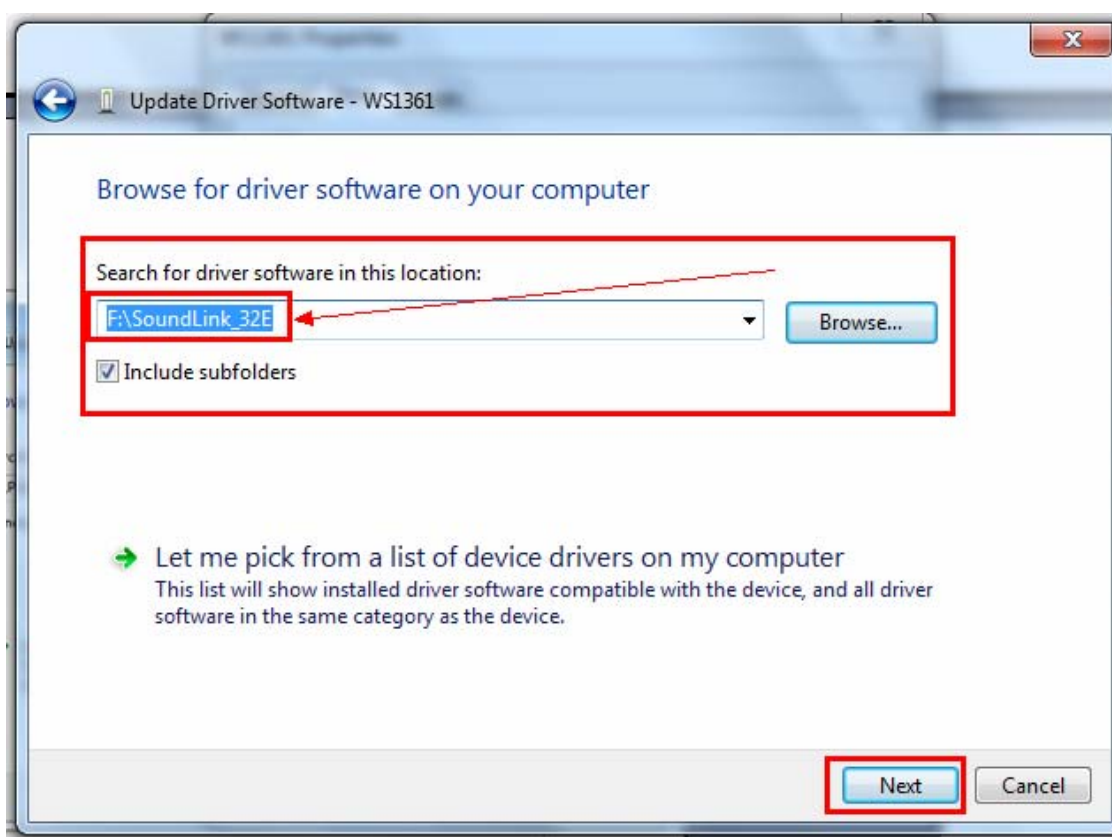


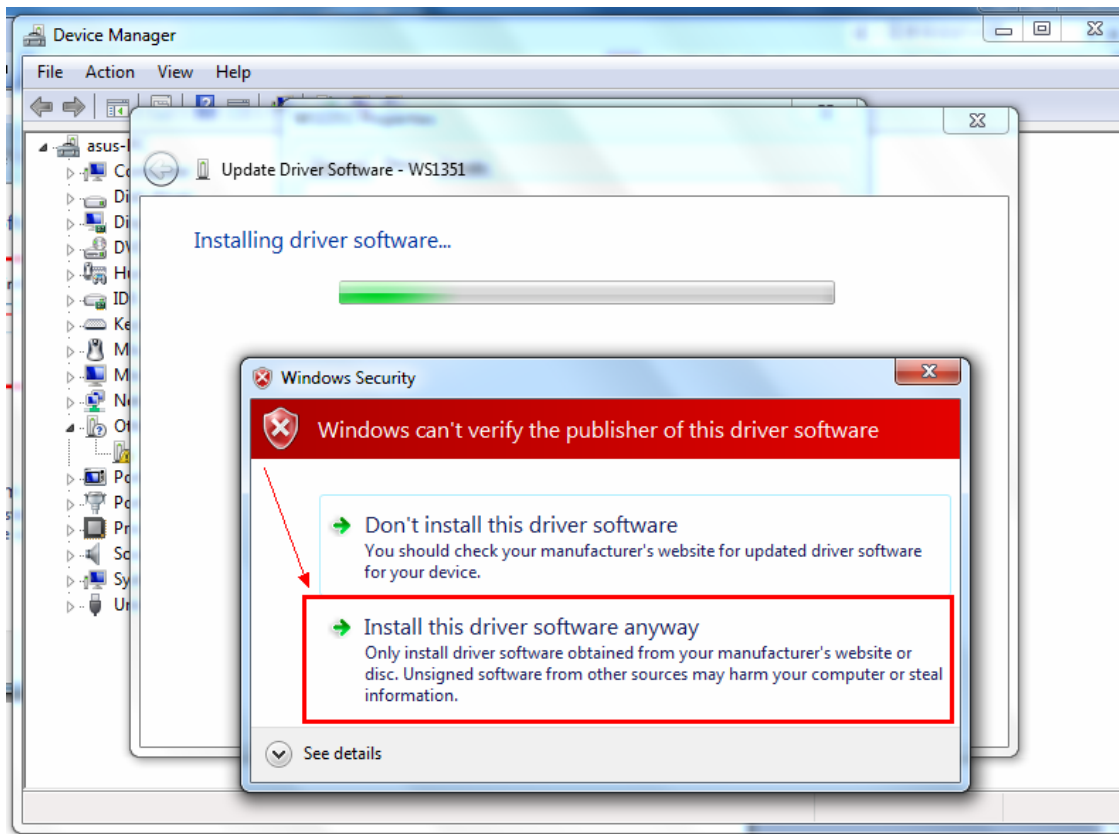
This step is very important :



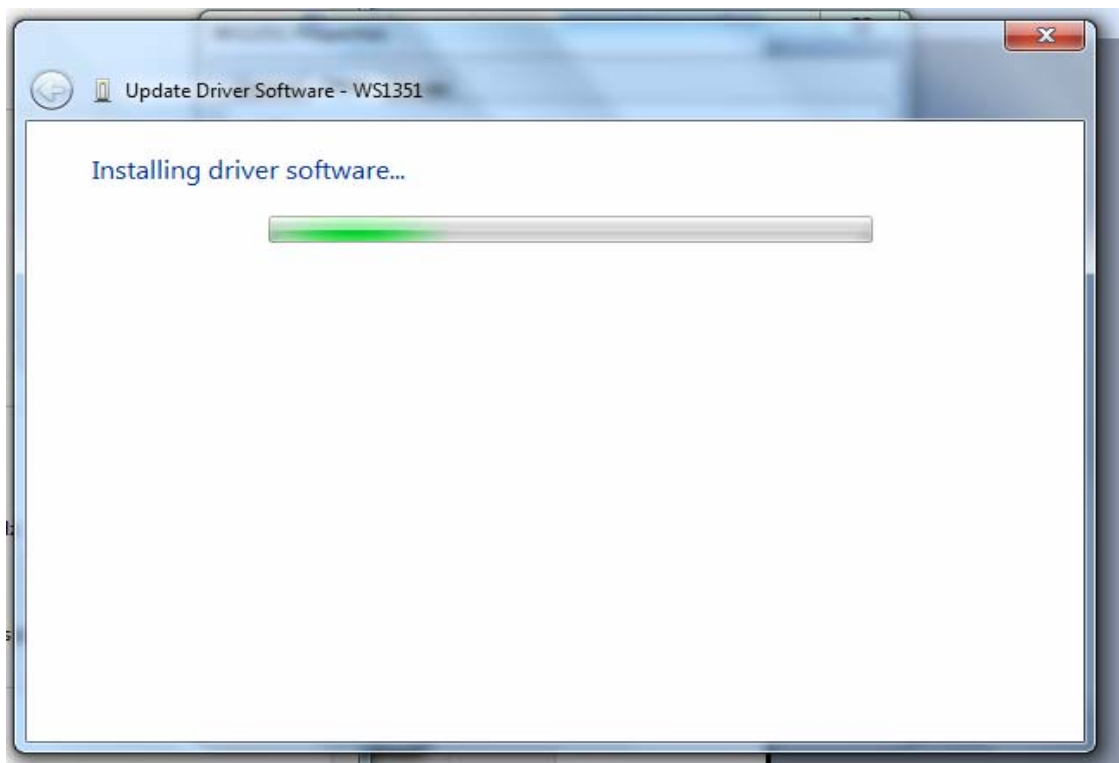


The directory chose here is the same director as the first step . And press "Next"

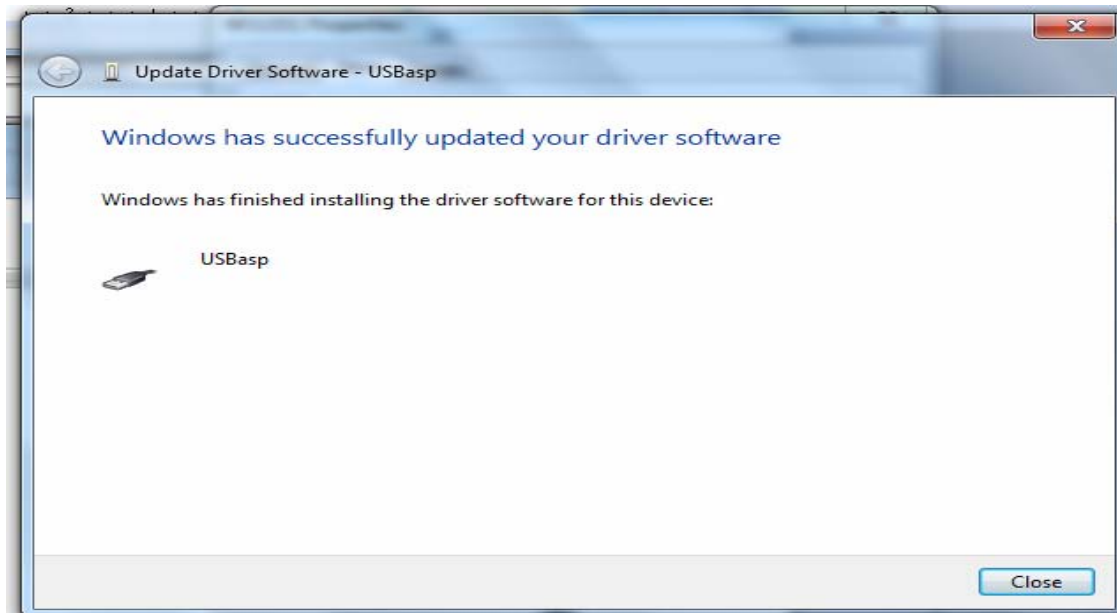




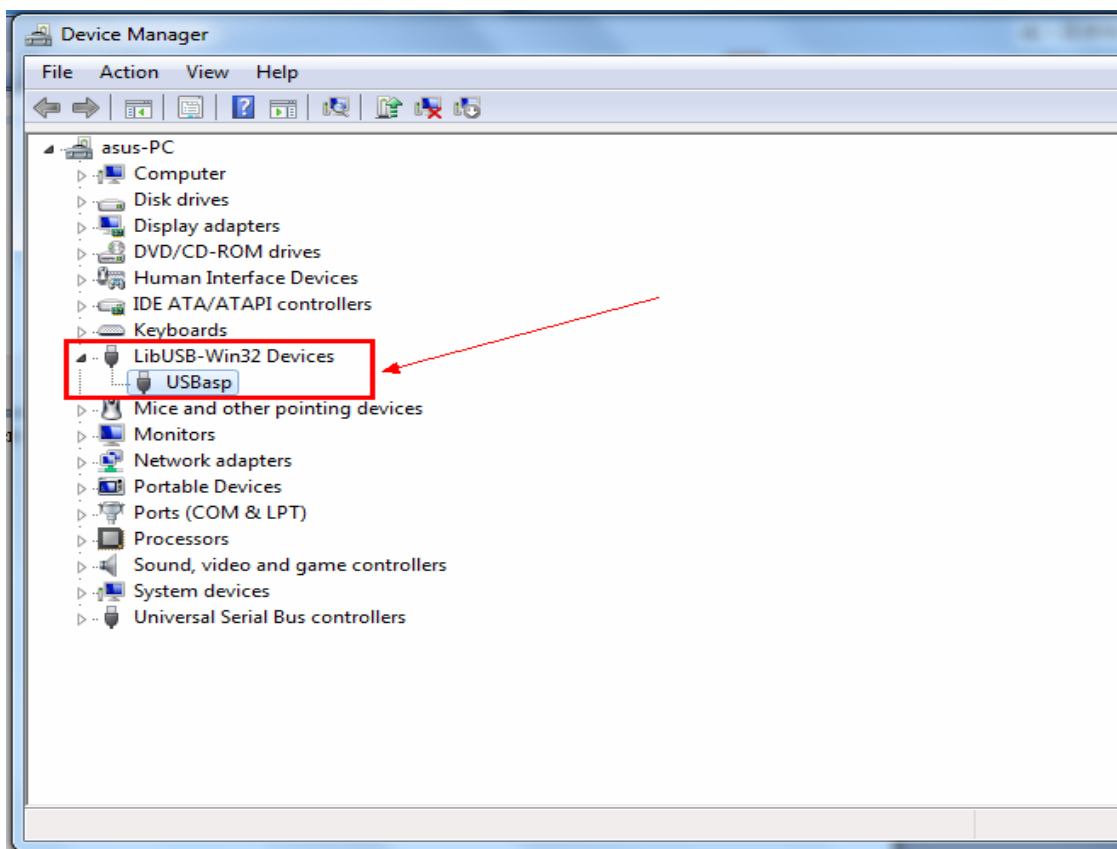
The driver is installing now :



USB driver successfully installed on the computer :



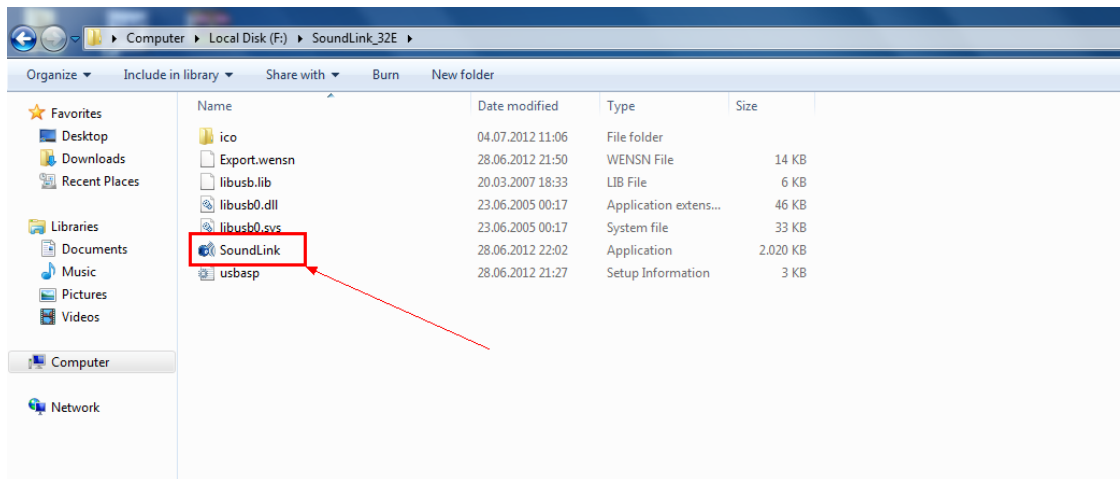
Go back to device manager , you will find a mark that indicates the USB driver is upgraded now :



Below is the instruction of how to use the software

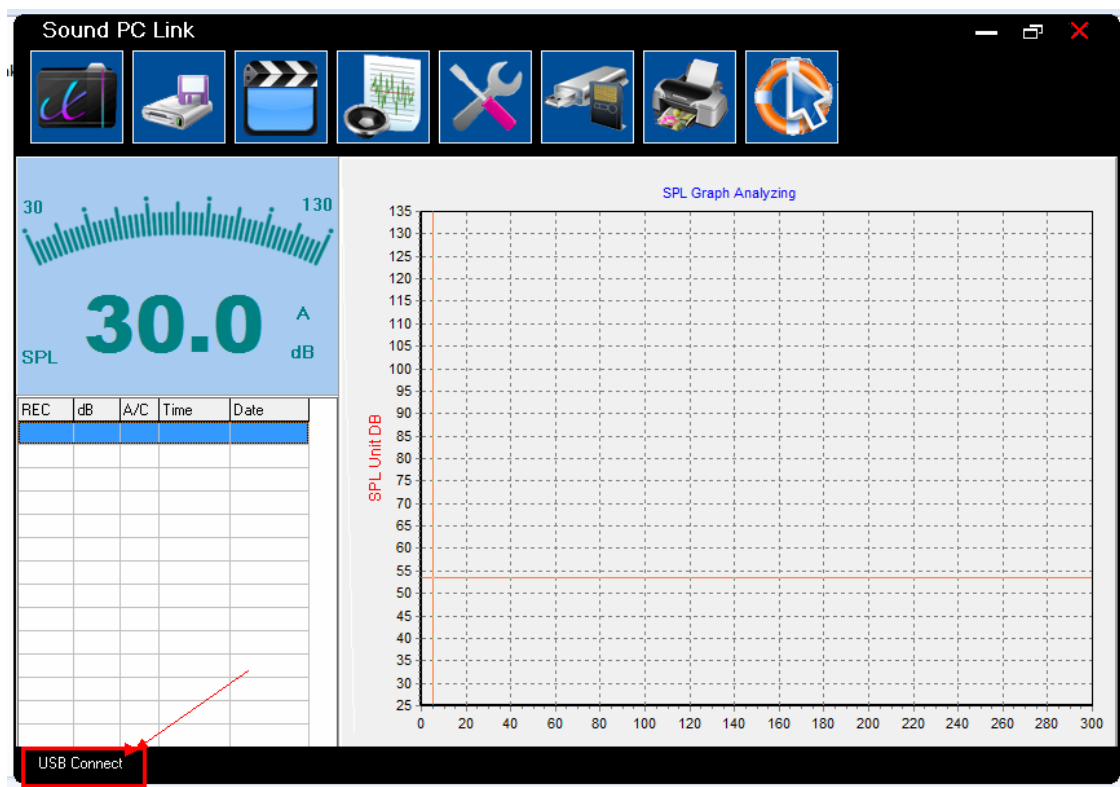


1,Open the directory where you put all the contents from the CD.



find

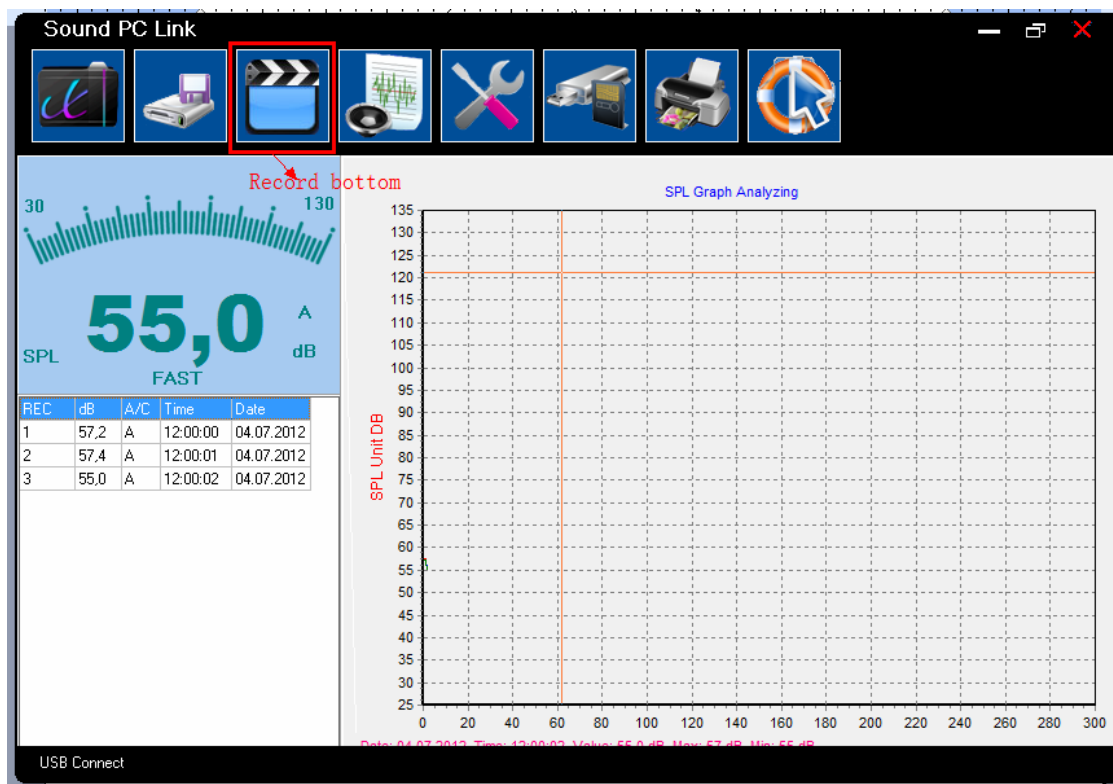
Sound Link.exe, and double click it .



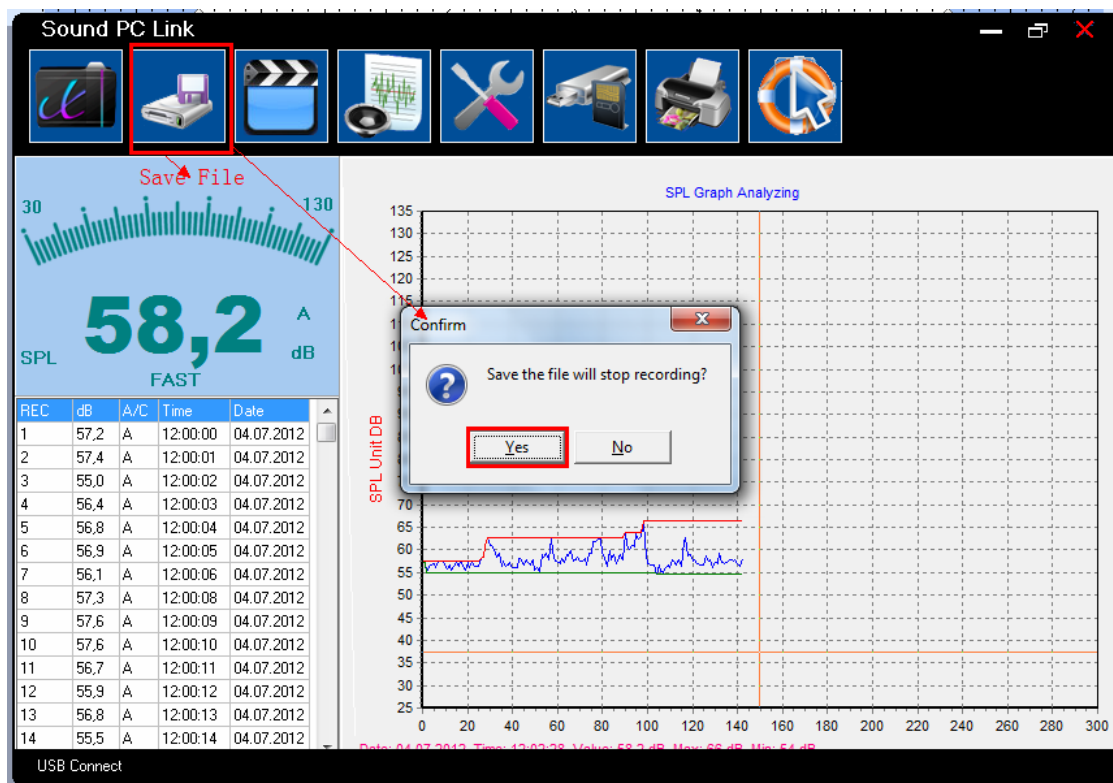
"USB Connect " on the left corner indicates that the device is connected with computer .

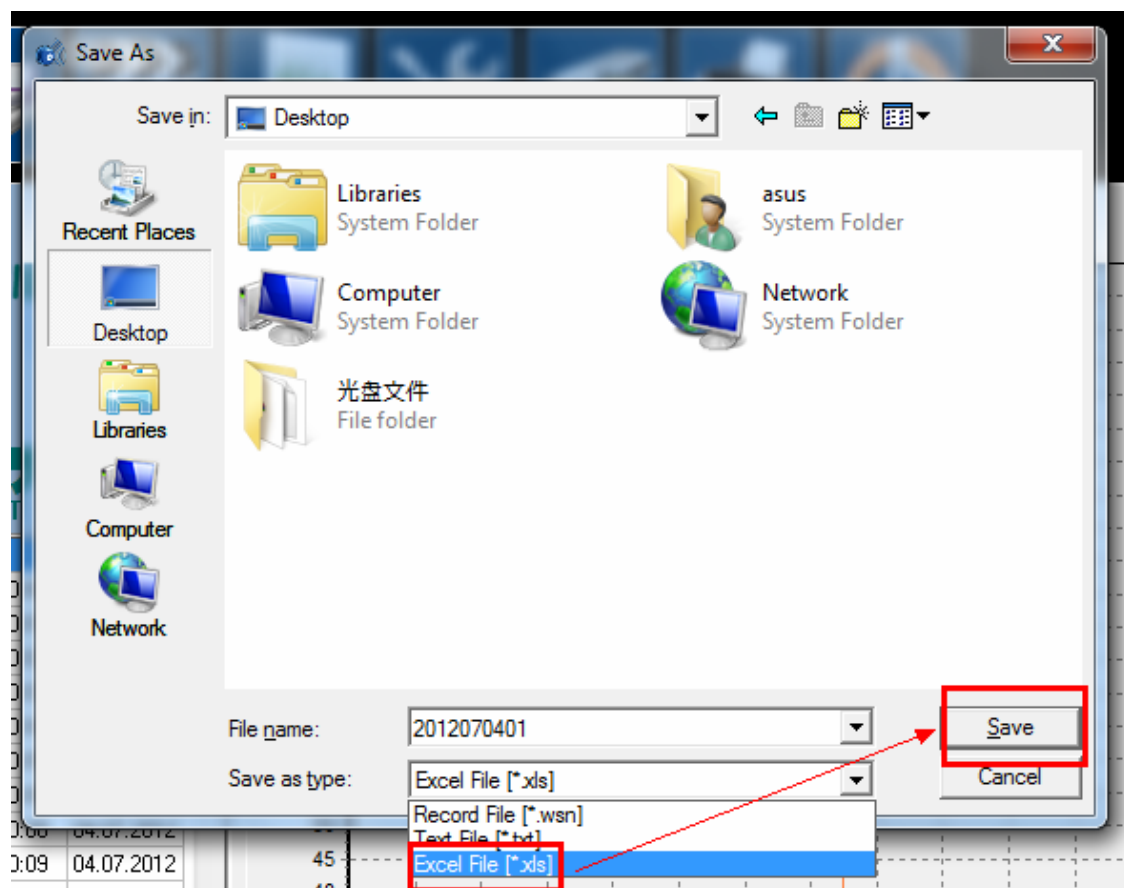


Record button is showing on the below picture :

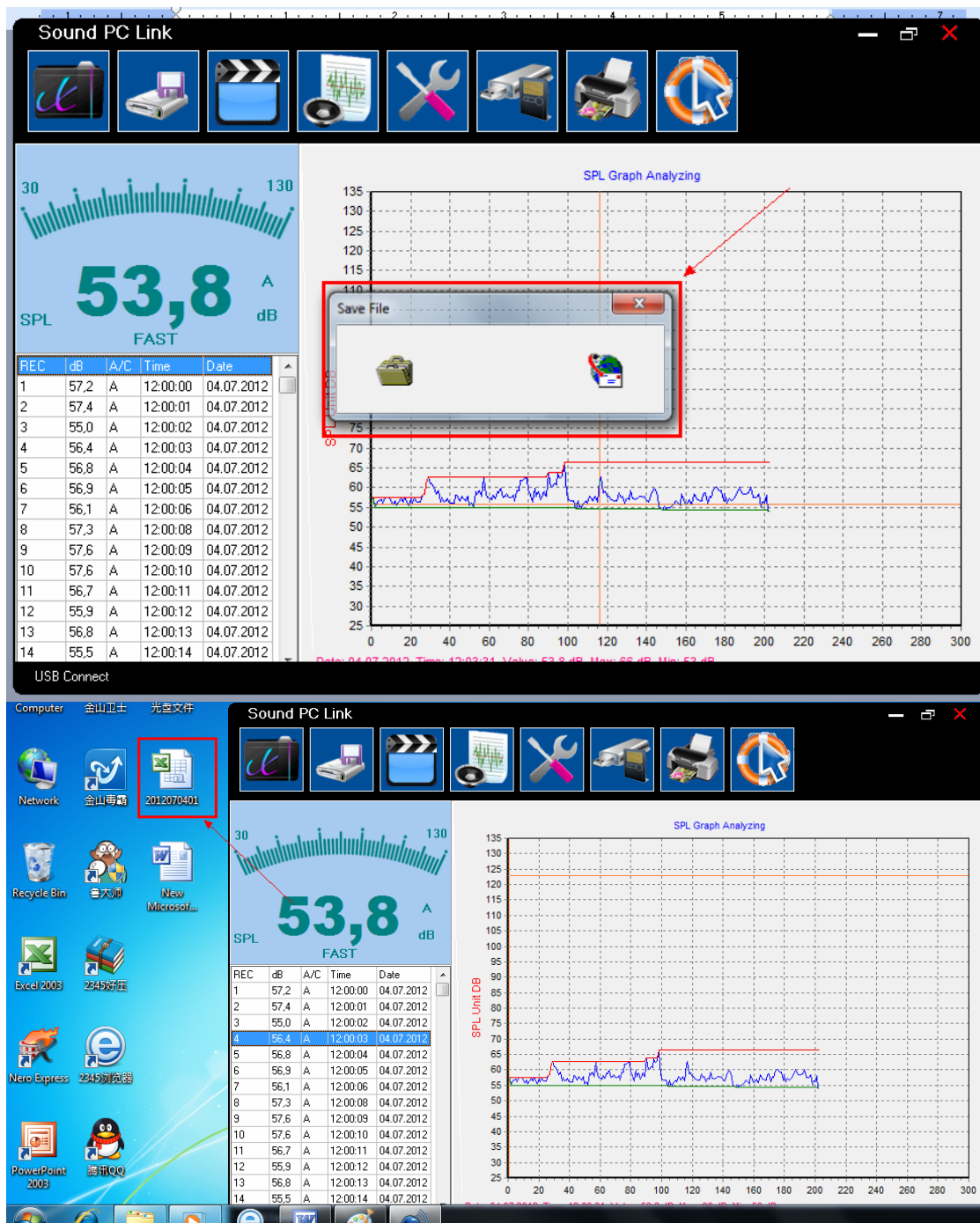


Save the file to excel or txt format , press Yes , on the below picture





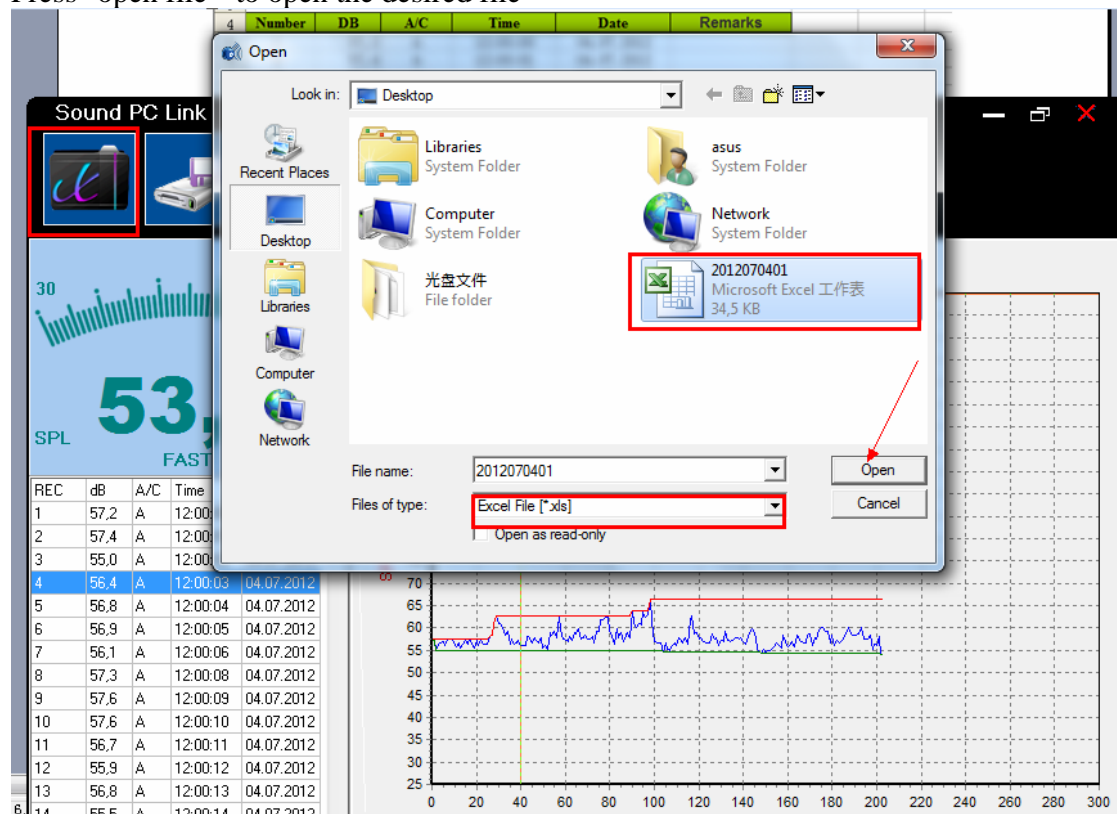
It is saving the file now , make sure your computer is under Windows Media players setting . Or the file saving can be failed .



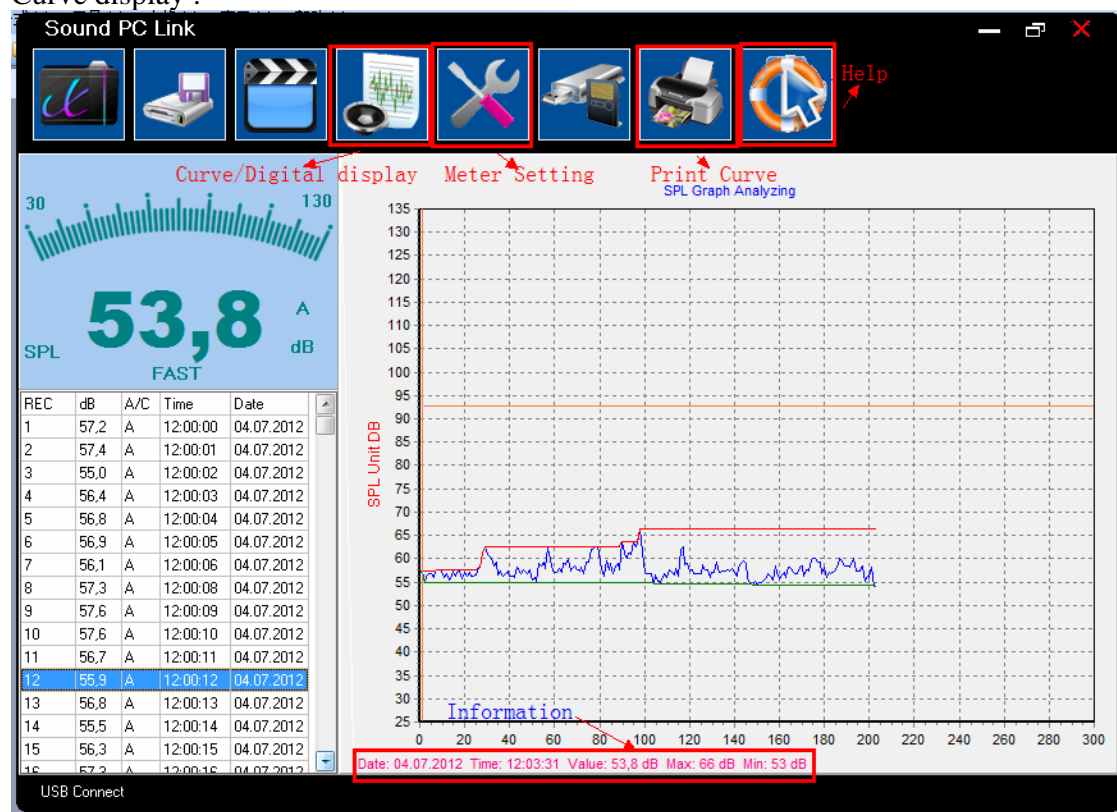
If the file is saved successfully , then you can open and check it with correct software .

Microsoft Excel - 2012070401								
文件(F) 编辑(E) 视图(V) 插入(I) 格式(O) 工具(T) 数据(D) 窗口(W) 帮助(H)								
100% 宋体								
A2								
	A	B	C	D	E	F	G	H
2			<b>TESTING RESULTS</b>					
3								
4	<b>Number</b>	<b>DB</b>	<b>A/C</b>	<b>Time</b>	<b>Date</b>	<b>Remarks</b>		
5	1	57,2	A	12:00:00	04.07.2012			
6	2	57,4	A	12:00:01	04.07.2012			
7	3	55,0	A	12:00:02	04.07.2012			
8	4	56,4	A	12:00:03	04.07.2012			
9	5	56,8	A	12:00:04	04.07.2012			
10	6	56,9	A	12:00:05	04.07.2012			
11	7	56,1	A	12:00:06	04.07.2012			
12	8	57,3	A	12:00:08	04.07.2012			
13	9	57,6	A	12:00:09	04.07.2012			
14	10	57,6	A	12:00:10	04.07.2012			
15	11	56,7	A	12:00:11	04.07.2012			
16	12	55,9	A	12:00:12	04.07.2012			
17	13	56,8	A	12:00:13	04.07.2012			
18	14	55,5	A	12:00:14	04.07.2012			
19	15	56,3	A	12:00:15	04.07.2012			
20	16	57,3	A	12:00:16	04.07.2012			
21	17	56,4	A	12:00:17	04.07.2012			
22	18	57,6	A	12:00:18	04.07.2012			
23	19	56,8	A	12:00:19	04.07.2012			
24	20	55,6	A	12:00:20	04.07.2012			
25	21	57,2	A	12:00:21	04.07.2012			
26	22	56,2	A	12:00:22	04.07.2012			
27	23	57,2	A	12:00:23	04.07.2012			
28	24	56,4	A	12:00:24	04.07.2012			
29	25	56,4	A	12:00:25	04.07.2012			
30	26	56,5	A	12:00:26	04.07.2012			

Press "open file " to open the desired file



Curve display :



Digital display

